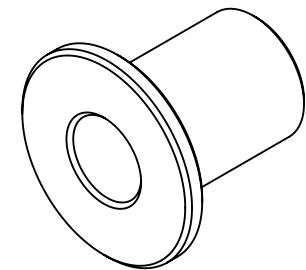
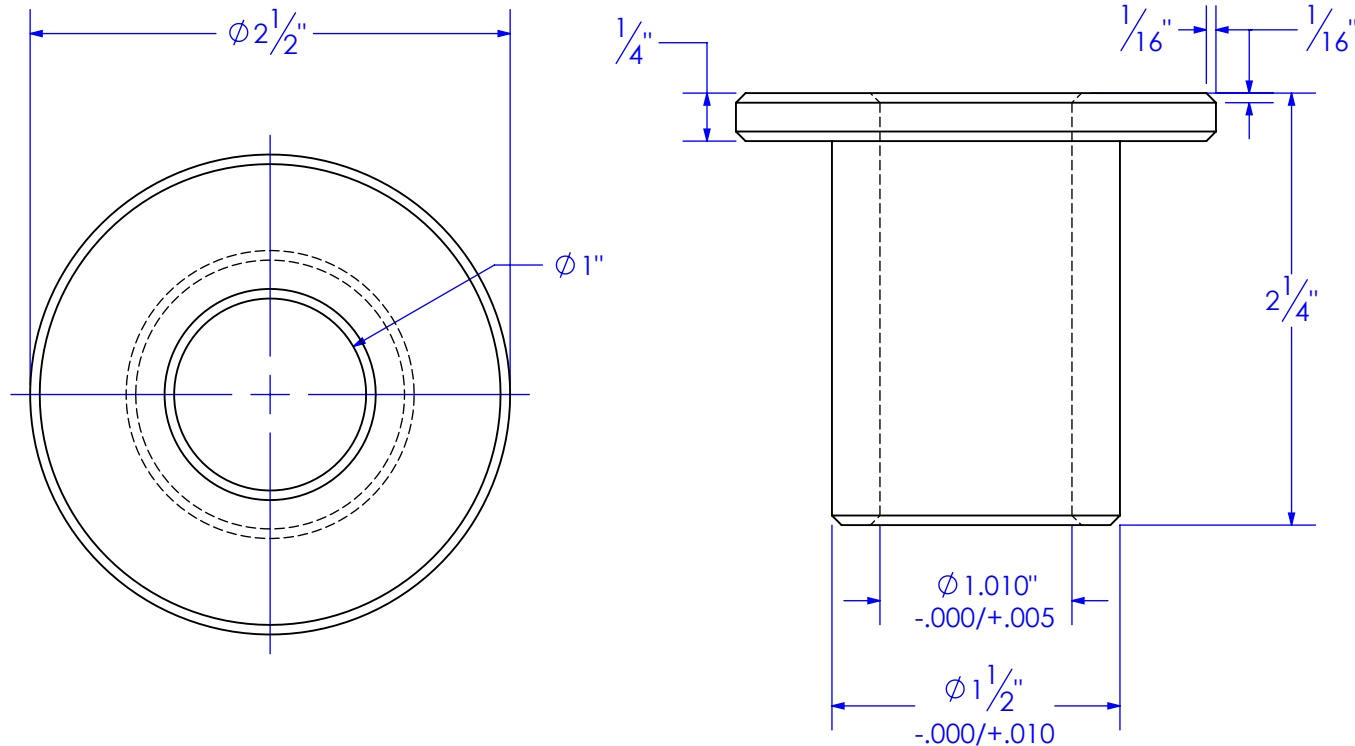


PART NUMBER	DESCRIPTION	MATERIAL
HD-BU- 2.5ODx1.10IDxL2.250 FLANGE	BUSHING, SPRING, FLANGED, NYLON	OIL FILLED CAST NYLON TUBE

REVISIONS			
REV.	DESCRIPTION	DATE	APPROVED
A	INITIAL RELEASE	10/9/2017	
B	CHANGE OD TOLERANCE & FLANGE THICKNESS	10/10/2017	




NOTE: CHAMFER ALL EDGES

PROPRIETARY AND CONFIDENTIAL
THE INFORMATION CONTAINED IN THIS
DRAWING IS THE SOLE PROPERTY OF TRIPLE
C INC. ANY REPRODUCTION IN PART OR
AS A WHOLE WITHOUT THE WRITTEN
PERMISSION OF TRIPLE C, INC IS PROHIBITED.

UNLESS OTHERWISE SPECIFIED:
DIMENSIONS ARE IN INCHES
TOLERANCES:
FRACTIONAL $\pm 1/16$
ANGULAR: MACH ± 1 BEND \pm
TWO PLACE DECIMAL $\pm .010$
THREE PLACE DECIMAL $\pm .005$

MATERIAL OIL FILLED CAST
NYLON TUBE
DO NOT SCALE DRAWING

	NAME	DATE	P.O. BOX 248, SABETHA, KS 66534 (785) 284-3674 FAX (785) 284-3931	
DRAWN	ETHAN	10/10/2017		
PART #	HD-BU			
ASM #	1.50ODx1.01IDxL2.250			
COMMENTS:			SIZE	DWG. NO.
BUSHING, SPRING, FLANGED, NYLON			A	12-2446
			SCALE: 1:2	WEIGHT: 0.12
			SHEET 1 OF 1	

REV
B